


Swine Sperm Viability & Morphology Kit

100 determinations

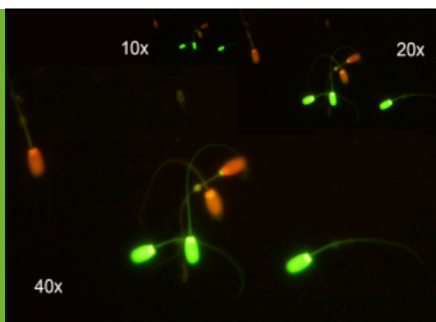
REF	Product reference
LOT	Lot number
	Use by

Revised: February 2017

SQS Test® has been developed by ZoitechLab to be used with SQS analyzers in response to the needs of users for assessing at the same time sperm viability and morphology in boar.

PRINCIPLE OF THE METHOD

The kit uses a dual staining method that allows differentiating live and death sperm cells, and abnormalities. Green and red color indicates live and dead cells, respectively.



DESCRIPTION OF COMPONENTS

- ∞ Fluorochrome Tubes (FT). 100 units.
- ∞ Counting Chambers (CC). 25 slides with 4 chambers per slide.
- ∞ Instructions of Use.

MATERIAL AND EQUIPMENT REQUIRED NOT PROVIDED WITH THE KIT

Seminal Quality System (SQS) device. SQS is a family of automated semen analyzer to boar station laboratories. Fridge at 15°C, plastic gloves, and P20 or P100 micropipette, tips.

SPERM SAMPLE

Fresh or refrigerated semen samples should be collected in a sterile recipient.

INSTRUCTIONS FOR USE

1 Previous steps. Processing the sample

Take an aliquot of the raw sperm sample and dilute it at recommended 1:10 to 1:20 in Acromax® extender (Fig. 1).

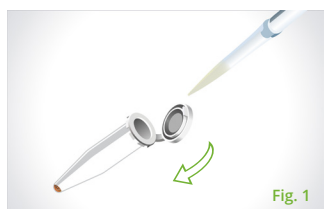


Fig. 1

2 Staining and visualization

To make each analysis, use a fluorochrome tube (FT). Using a micropipette transfer 20µl of the diluted sperm sample to the fluorochrome tube and mix gently avoiding air bubbles formation. When cell suspension will take a red/orange color the staining process is completed (Fig. 2).

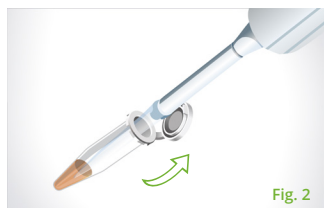


Fig. 2

3 With the tip of the micropipette place a drop of 2µl of the cell suspension close to the border of the disposable counting chamber. The fluid line indicates when to stop the filling process (Fig. 3).

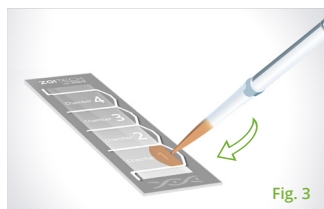


Fig. 3

4 Place the counting chamber to the SQS device, and follow the specific instructions for the analyzer to visualize your results. Each sample only can re-analyze two times before the chamber starts to be dried. After finish the analysis the chamber cannot be re-used.

ZoitechLab, S.L.

C/ Calibre, 121 · 28400 · Collado-Villalba · Madrid (SPAIN)

T. +34 91 850 42 32 · F. +34 91 850 38 72

info@zoitech.com · www.zoitech.com

INTERPRETING THE RESULTS

The SQS devices calculate concentration, viability and morphology abnormalities, related to insemination doses provided with the sample analyzed. The results should be evaluated taking into account sperm sample.

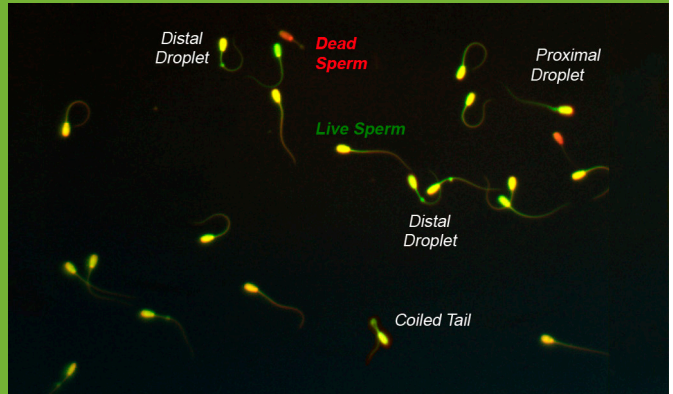
SPERM CLASSIFICATION

Follow the specific protocol of each device used. Normally, score a minimum of 300 sperm per sample will be enough, following the criteria:

Red head:
sperm with damaged membrane.
Considered as dead.

Green head:
sperm with intact membrane.
Considered as live.

Two colors (red areas):
sperm with not completely damaged membrane, considered as dead.



SAFETY AN THE ENVIROMENTAL

- ⌘ Avoid contact with skin or eyes, and to prevent inhalation. The Fluorochrome Tubes (FT) contains fluorochromes that must to manipulate with plastic gloves. Follow the manufacturer's Material Safety Data Sheet regarding safe handling.
- ⌘ Do not release the products used into the environment. Please follow the safety procedure of your laboratory regarding to chemicals storage and toxic products disposal.

PRECAUTIONS

- ⌘ All samples and reagents should be treated as potentially infectious and the user must wear protective gloves, eye protection and laboratory coats when performing the test.
- ⌘ The test should be discarded in a proper biohazard container once it has been used.
- ⌘ Do not eat, drink or smoke in the area where specimens and kit reagents are handled.
- ⌘ Use by date which appears on the package label.
- ⌘ Material Safety Data Sheet is available on request.

STORE CONDITIONS

- ⌘ Store at room temperature (22°C), in a dark and dry place.
- ⌘ The kit has an expiration date of 2 years.



For Research Use Only. Not intended for any animal or human therapeutic or diagnostic use.

SQS
Seminal Quality System
Swine Sperm Viability & Morphology Kit
100 determinations

ZoitechLab, S.L.
C/ Calibre, 121 · 28400 · Collado-Villalba · Madrid (SPAIN)
T. +34 91 850 42 32 · F. +34 91 850 38 72
info@zoitech.com · www.zoitech.com

ZOITECHI
lab 

Zoitechology is life